

## ELEVATION B



3,827 sq. ft. | 5 bedroom | 2.75 bath/3.5 with optional bath  
2 car garage | bonus room | zoom room | bedroom suite on main

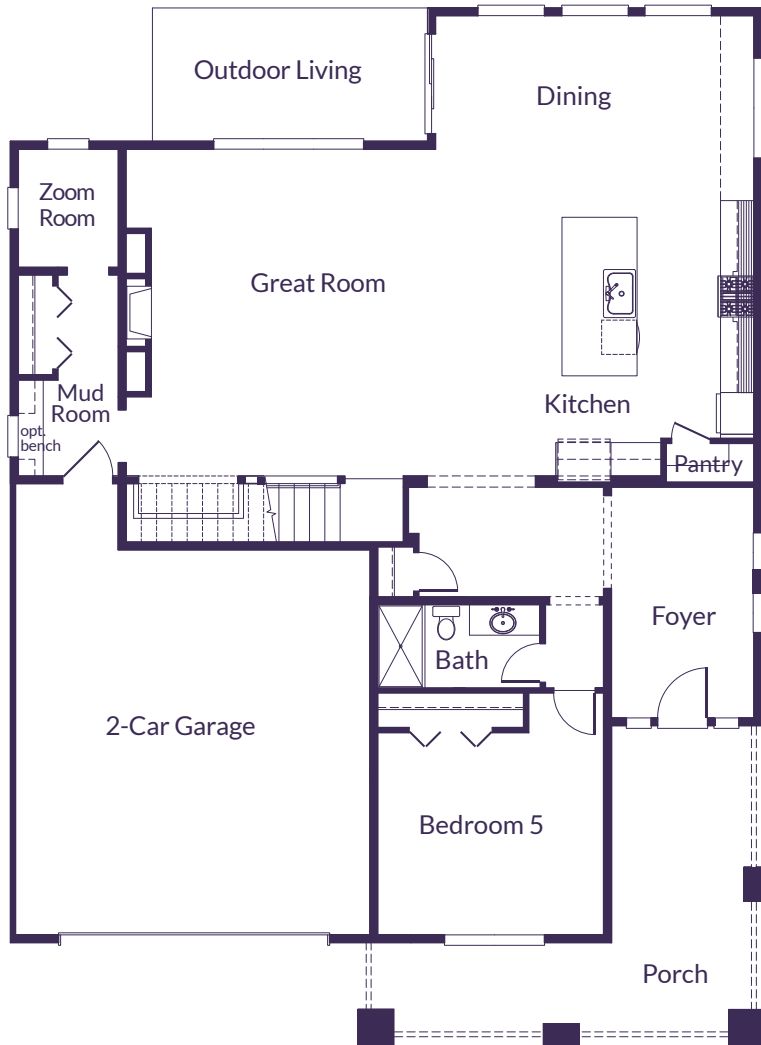
VillageLifeHomes.com



# TRAFALGAR

3827 sq. ft.

## MAIN



## UPPER



3,827 sq. ft. | 5 bedroom | 2.75 bath/3.5 with optional bath  
2 car garage | bonus room | zoom room | bedroom suite on main

VillageLifeHomes.com

