

ELEVATION A



3,827 sq. ft. | 5 bedroom | 2.75 bath/3.5 with optional bath
2 car garage | bonus room | zoom room | bedroom suite on main

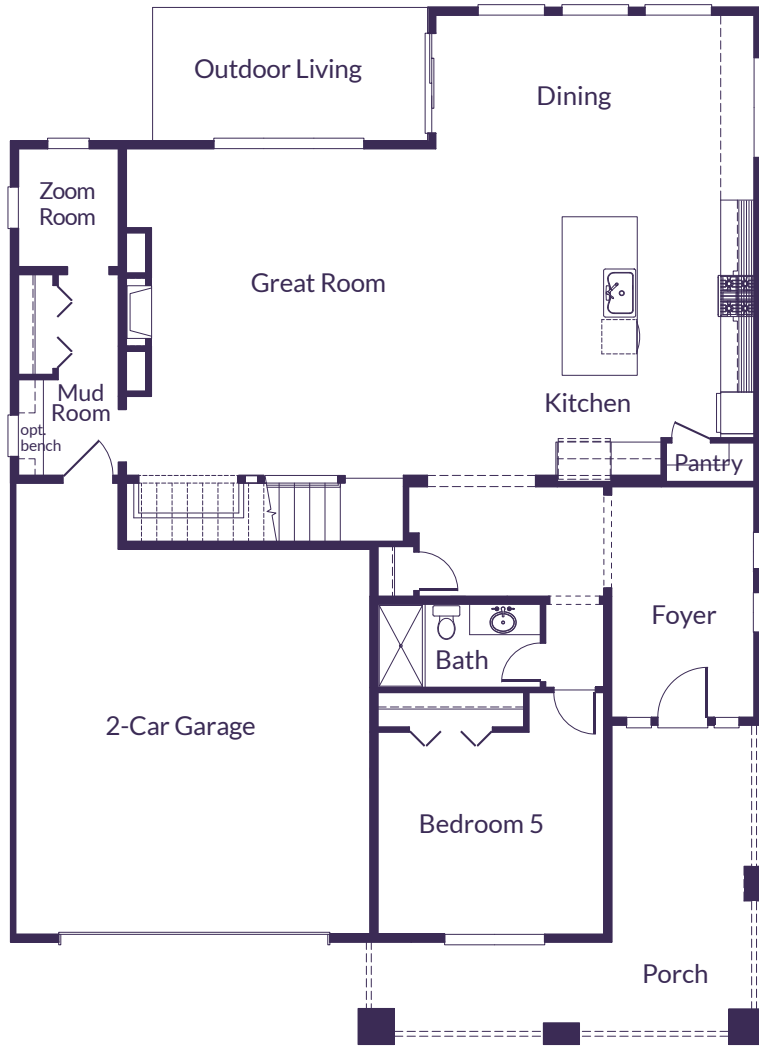
VillageLifeHomes.com



TRAFALGAR

3827 sq. ft.

MAIN



UPPER



3,827 sq. ft. | 5 bedroom | 2.75 bath/3.5 with optional bath
2 car garage | bonus room | zoom room | bedroom suite on main

VillageLifeHomes.com

