

## ELEVATION A



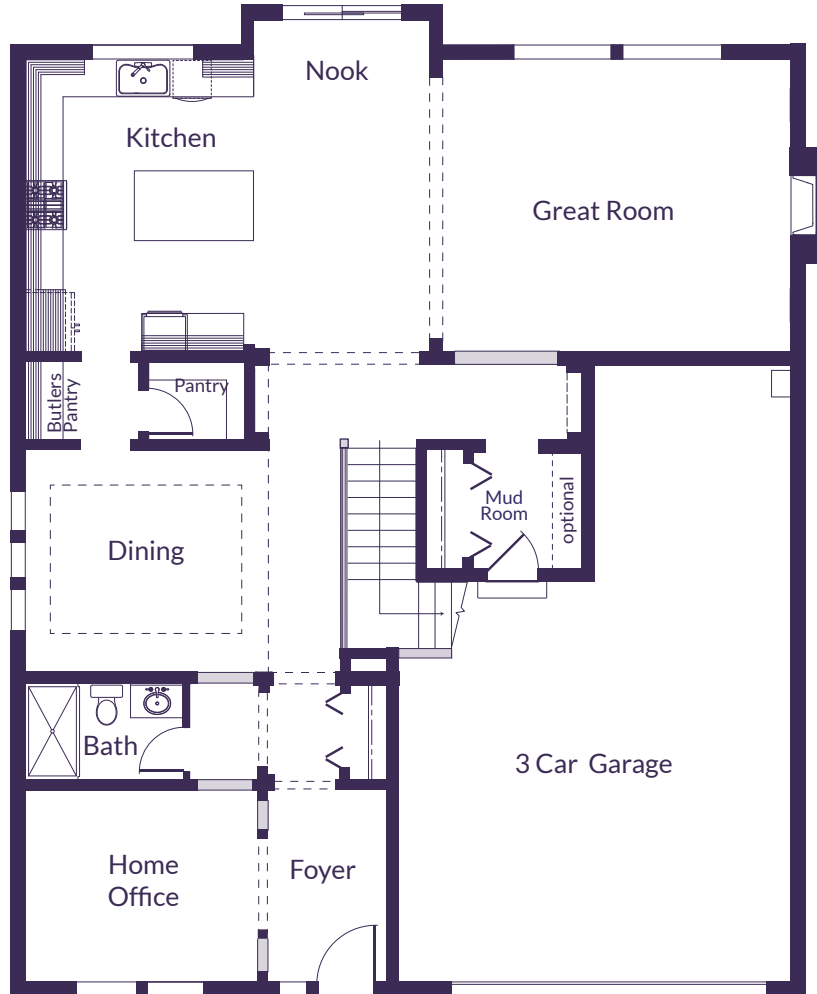
3,301 sq. ft. | 4 bedroom | 2.75 bathroom

3 car garage | bonus | formal dining | butler's pantry | home office

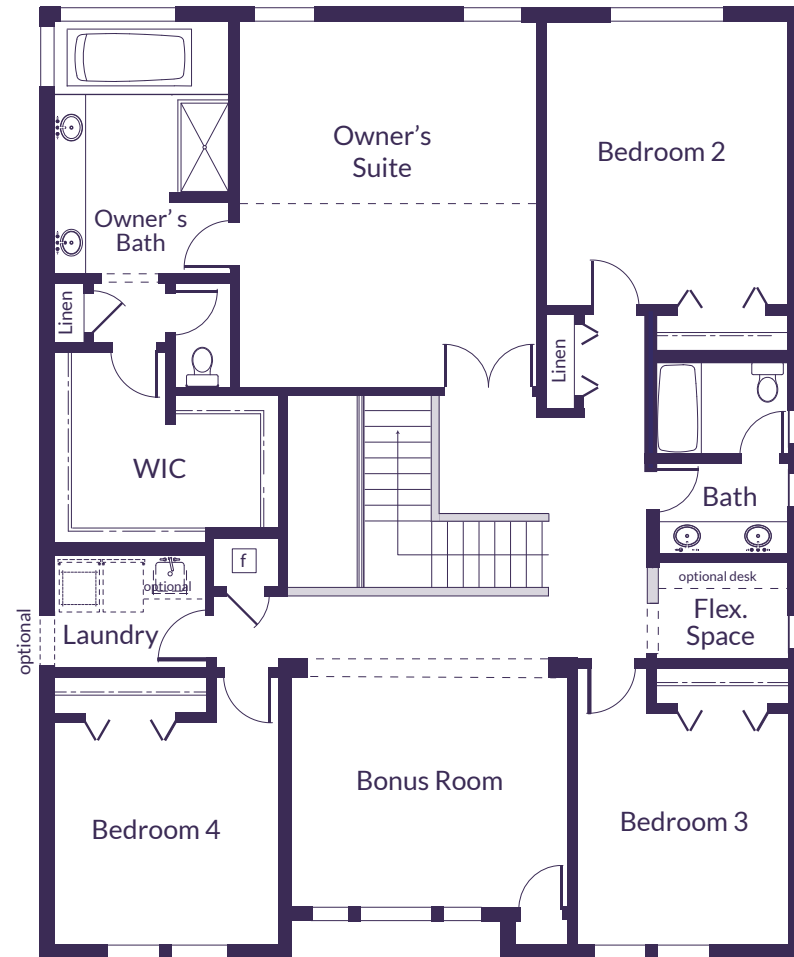
VillageLifeHomes.com



## MAIN



## UPPER



3,301 sq. ft. | 4 bedroom | 2.75 bathroom

3 car garage | bonus | formal dining | butler's pantry | home office

VillageLifeHomes.com

