

ELEVATION B

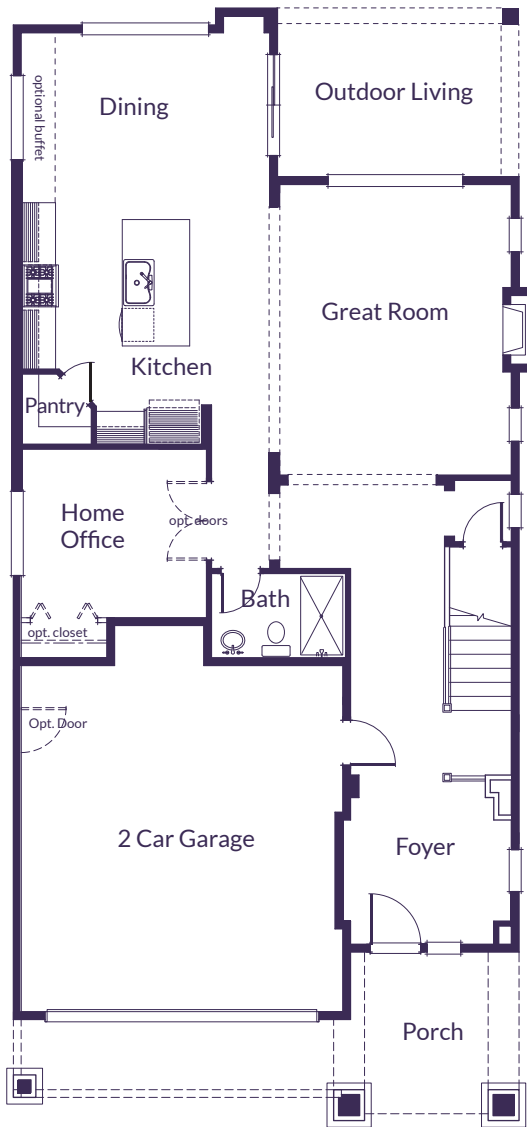


2,928 sq. ft. | 4 bedroom | 2.75 bath
2 car garage | bonus room | home office | outdoor living

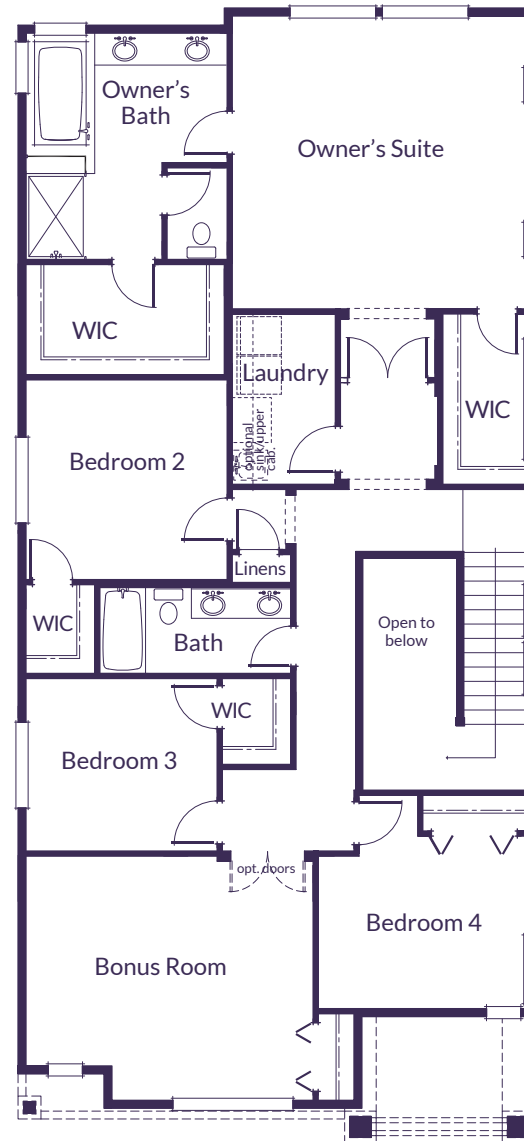
VillageLifeHomes.com



MAIN



UPPER



2,928 sq. ft. | 4 bedroom | 2.75 bath
2 car garage | bonus room | home office | outdoor living

VillageLifeHomes.com

